

PGIM Letterkenny



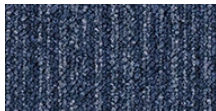
AL Architects were appointed for as Architects and DTL for this accelerated office refurbishment and fitout project comprising circa 1970sqm at ground floor and 275sqm at mezzanine level. The existing building was stripped back to bare shall and redesigned to accommodate several departments within the PGIM company. We have an extensive history working with Forbo and particularly Paul Carney. The practice has a history of health board and Education projects , both completed and current with which Forbo have supplied mainly sheet flooring such as Marmoleum and Surestep. We made initial contact with Paul pre tender to discuss our aspirations and visons for the building and were offered a comprehensive selection of carpet and sheet finishes. From these the initial design proposals were formulated and received client approval in principal. The inevitable post tender cost analysis resulted in a 35% reduction in the flooring budget but with the same expectancy with regard to quality and finish. The conversation with Forbo was very simple: "We have this amount of money; we need to achieve a high end finish throughout the building...what are our options?"

Project Name	PGIM HQ Refurbishment
Location	Letterkenny, Co Donegal, Ireland
Architect	AL Architects Ltd
Floor Designer	Damien Kearns, Adam Leadley
General Contractor	Boyle Construction
Flooring Contractor	Ardmore Flooring
Photographer	Kelvin Gillmor

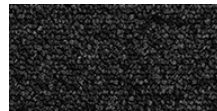
Used Products



Tessera Layout & Outline oceanis



Tessera Layout & Outline bubblegum



Tessera Layout & Outline mono



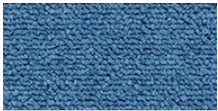
Tessera Layout & Outline plasmatron



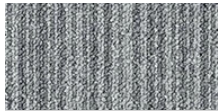
Tessera Layout & Outline alloy



Tessera Layout & Outline maraschino



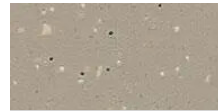
Tessera Layout & Outline ice pop



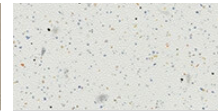
Tessera Layout & Outline soda



Tessera Layout & Outline calcium



Surestep Original cement



Surestep Original snow



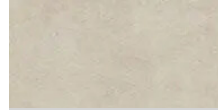
Surestep Laguna silver grey



Tessera Infused morning cloud



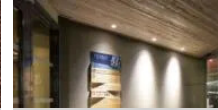
Allura Material natural concrete (50x50 cm)



Allura Flex Material white sand



Flotex Converge planks Converge radiant



Nuway Grid

